

NDOR – Construction and Detour Info – May 16, 2012

No map is published - Please use the 511 web area and the [Icons](#) to determine locations. www.511.nebraska.gov

The Items listed are ONLY those that are longer than one (1) month in duration. Travelers may encounter items not listed here.

For Roadwork less than one month in duration - Call 511 or 800-906-9069 or by checking the 511 TEXT VERSION page.

Always check 511 for the most current info.

[SUBSCRIBE HERE](#) to Receive Automatic Emails whenever this Document is Updated.

[Click here for a separate list of all 2012 resurfacing projects for I-80 from Lincoln to Western Nebraska](#)
(always check the list below, and 511 to determine if a project has begun)

| Highway Number & General Location Info | Additional Info – if available – Restrictions – Type of Work <i>REMEMBER to Check 511 TEXT Page for extra information</i> | Date Entered/ Updated | District | Anticipated Completion |
|--|---|-----------------------------|----------|---------------------------|
| Interstate 80 | | | | |
| Both directions @ Roscoe Interchange #133 | Road construction, lane restrictions, 12' width restriction; speed zones MAP | 3-21-12 | 6 | June 2013 |
| Both directions @ Paxton Interchange #145 | Road construction MAP | 3-21-12 | 6 | June 2013 |
| Both directions @ Gibbon Interchange #285 | Road construction, lane restrictions, 12' width restriction | 3-21-12 | 4 | Summer 2012 |
| Both directions @ Lincoln North US-77 Interchange #405 | Road construction, lane restrictions | 9-1-11 | 1 | November 2013 |
| Both directions @ Waverly Interchange #409 | Road construction, lane restrictions | 9-1-11 | 1 | November 2012 |
| Both directions @ Minden Interchange #279 | Road construction, lane restrictions, 11' width restriction | 5-2-12 | 4 | |
| Both directions @ Lincoln I-180 Interchange #401 | Road construction, lane closure/shifts MAP | 9-26-11 | 1 | Fall 2012 |
| Both directions @ Lincoln-Dawson County Line | Road construction, lane closures, 12' width restriction | 3-21-12 | 6 | Fall 2012 |
| Both directions @ Goehner Interchange #373 | Road construction, lane closures, 12' width restriction | 3-14-12 | 1 | October 2012 |
| Both directions @ Lincoln Airpark Interchange #395 | Lane closures, 12' width restriction | 3-14-12 | 1 | September 2012 |
| Both directions @ York-Seward County Line | Road construction, lane restrictions, 12' width restriction | 4-11-12 | 4 | |
| Both directions @ Milford Interchange #382 | Lane restrictions, 12' width restriction | 3-14-12 | 1 | September 2012 |
| Both directions @ Giltner Interchange #324 | Road construction, lane restrictions, 12' width restriction, speed zones | 4-4-12 | 4 | October 2012 |
| Interstate 680 | | | | |
| Both directions @ Omaha I-80 Interchange | Nighttime lane and ramp closures | 5-2-12 | 2 | Summer 2012 |
| West @ Omaha L-28H 30 th Street Interchange | Pavement repairs, on-ramp closed | 5-16-12 | 2 | |

| Highway Number & General Location Info | | Additional Info – if available – Restrictions – Type of Work <i>REMEMBER to Check 511 TEXT Page for extra information</i> | Date Entered/Updated | District | Anticipated Completion |
|---|--|---|----------------------|----------|------------------------|
| Highways in Nebraska – Numerically | | | | | |
| 4 | Both directions @ Pawnee-Richardson County Line | Road construction, lane restriction, flaggers and traffic signal, 11' width restriction | 5-9-12 | 1 | October 2012 |
| 6 | Both directions @ 120 th Street in Omaha | Nightly road construction, lane closures | 3-21-12 | 2 | October 2012 |
| 6 | East @ Grafton | Road construction, 12' width restriction | 3-28-12 | 4 | |
| 6 | East @ Jct. N-10 in Minden | Road construction, 12' width restriction | 4-25-12 | 7 | |
| 7 | Both directions @ Riverview | Road construction, 12' width restriction | 4-25-12 | 8 | May 2012 |
| 8 | Both directions @ Thayer-Jefferson County Line | Bridge closed, marked detour | 5-16-12 | 4 | |
| 10 | North @ Jct. I-80 Newark-Minden Interchange #279 | Road construction, 11' width restriction | 4-11-12 | 7 | Fall 2012 |
| 10 | North @ Jct. N-74 Minden | Road construction, 12' width restriction | 4-25-12 | 7 | |
| 14 | Both directions @ Jct. S-54A and N-84 east of Verdigre | Roadwork, shoo-fly, speed reduction | 6-30-11 | 3 | Spring 2012 |
| 14 | Both directions @ Jct. I-80 Aurora Interchange #332 | Bridge maintenance, 12' width restriction | 5-9-12 | 4 | |
| 15 | Both directions @ east Jct. US-275 | Road construction, lane restriction with traffic signals, 12' width restriction | 4-18-12 | 3 | May 2012 |
| 20 | Both directions @ south Jct. US-275 southeast of Inman | Road construction | 4-25-12 | 8 | June 2012 |
| 23 | East @ south Jct. US-83 (Maywood – Curtis) | Road construction, flagger and pilot vehicle during the day, lane restriction controlled by traffic signal, 10' width restriction | 3-8-12 | 7 | Fall 2012 |
| 24 | Both directions @ Madison-Stanton County Line | Road construction, lane restrictions, 11' width restriction and 40 Ton restriction, flaggers | 4-25-12 | 3 | October 2012 |
| 26 | Both directions @ Jct. N-29 Mitchell | Starts May 29 , paving operations, lane restrictions | 5-16-12 | 5 | July 2012 |
| 30 | East @ west Jct. N-10 and N-44 in Kearney | Road construction, lane restrictions, 12' width restriction | 5-2-12 | 4 | June 2012 |
| 30 | Both directions @ Jct. Gibbon Link L-10C | Road construction, 12' width restriction | 4-25-12 | 4 | June 2012 |
| 33 | Both directions @ east Jct. N-103 | Road construction, lane closures, flaggers and pilot vehicle, 12' width restriction | 3-28-12 | 1 | October 2012 |
| 34 | East @ Jct. N-27 | Road construction, 12' width restriction | 5-16-12 | 7 | |
| 36 | Both directions @ Jct. N-31 | Road construction, lane restrictions with flaggers and pilot vehicle during daytime only | 4-25-12 | 2 | July 2012 |
| 41 | Both directions @ Fillmore-Saline County Line | Lane closure, flaggers and pilot vehicle, 12' width restriction | 5-9-12 | 1 | June 2012 |
| 41 | East @ north Jct. N-15 east of Milligan | Starts May 21 , lane restrictions, flaggers and pilot vehicle, 12' width restriction | 5-16-12 | 1 | September 2012 |
| 45 | Both directions @ Platte-Madison County Line | Road construction, lane restrictions, 11' width restriction | 4-11-12 | 3 | October 2012 |

| Highway Number & General Location Info | | Additional Info – if available – Restrictions – Type of Work <i>REMEMBER to Check 511 TEXT Page for extra information</i> | Date Entered/Updated | District | Anticipated Completion |
|--|--|--|----------------------|----------|------------------------|
| 50 | Both directions @ Jct. Louisville Lakes Rec. Rd. R-13L | Road construction, lane closures, flaggers and pilot vehicle, 10' width restriction | 5-2-12 | 2 | Fall 2012 |
| 75 | Both directions @ Cass – Sarpy County Line (Platteview Road & LaPlatte Road) | Traffic Shift – Click here to see map: MAP | 10-28-11 | 2 | Fall 2012 |
| 75 | Both directions @ Jct. US-136 Auburn | Road construction, lane restrictions, pilot cars and flaggers, 12' width restriction | 5-16-12 | 1 | July 2012 |
| 75 | Both directions @ north Jct. US-34 | Avenue B closed | 5-9-12 | 2 | Summer 2012 |
| 75 | Both directions @ Kansas-Nebraska State Line | Lane restrictions, flaggers and pilot vehicle | 5-16-12 | 1 | November 2012 |
| 77 | Both directions @ north Jct. N-109 east of Cedar Bluffs (Otoe Creek Bridge) | Road construction, speed zone, flaggers MAP | 3-21-12 | 1 | October 2016 |
| 77 | Both directions @ Jct. US-30 (Fremont South Bridges) | Road construction, temporary alignment | 3-28-12 | 2 | Summer 2013 |
| 77 | North @ Jct. N-64 southwest of Leshara | Bridge replacement, roadway closed MAP | 4-4-12 | 1 | November 2012 |
| 81 | Both directions @ Jct. N-12 | Road construction, lane restriction, 12' width restriction | 4-4-12 | 3 | October 2012 |
| 83 | Both directions @ Jct. US-30 North Platte | Lane restrictions, 12' width restriction | 4-11-12 | 6 | Fall 2012 |
| 83 | Both directions @ Jct. I-80 North Platte Interchange #177 | Lane restrictions, 10' width restriction | 4-11-12 | 6 | Fall 2012 |
| 84 | East @ Jct. N-14 and Verdigre Spur S-54A | Roadwork, narrow lanes, speed zone, shoo-fly in place | 4-20-11 | 3 | Spring 2012 |
| 92 | Both directions @ west Jct. N-2 | Road construction, lane restriction, 12' width restriction, flaggers and pilot car | 4-4-12 | 6 | |
| 103 | Both directions @ east Jct. N-33 northeast of Crete | Road construction, lane restriction, 12' width restriction, flaggers and pilot vehicle | 3-21-12 | 1 | October 2012 |
| 136 | Both directions @ north Jct. N-14 | Bridge maintenance | 4-4-12 | 4 | |
| 136 | East @ west Jct. N-4 | Lane closure, 12' width restriction | 5-2-12 | 1 | June 2012 |
| 159 | Both directions @ Rulo | Bridge construction | 2-3-12 | 1 | |
| 183 | Both directions @ Jct. Comstock Spur S-21C | Road construction on shoulder | 5-16-11 | 6 | Fall 2011 |
| 183 | North @ Kansas-Nebraska State Line | Road construction, 12' width limit | 4-25-12 | 7 | |
| 281 | North @ Spencer | Road construction, flaggers and pilot vehicles, 12' width restriction | 5-2-12 | 8 | August 2012 |
| 281 | North @ Webster-Adams County Line | Paving operations, 12' width restriction, flaggers, lane restriction | 5-9-12 | 4 | |
| 283 | North @ Jct. N-23 in Elwood | Road construction, lane restriction, 12' width restriction | 5-9-12 | 7 | June 2012 |
| 283 | Both directions @ Jct. US-30 in Lexington | Road construction, traffic signals, 10' width restriction | 4-11-12 | 6 | Summer 2012 |
| 370 | Both directions @ Jct. US-6 & N-31 (In Gretna) | Lane closures, temporary traffic signals | 3-23-11 | 2 | September 2013 |
| L80E | North @ Jct. US-6 in Friend | Road construction, 11' width restriction | 5-9-12 | 1 | |

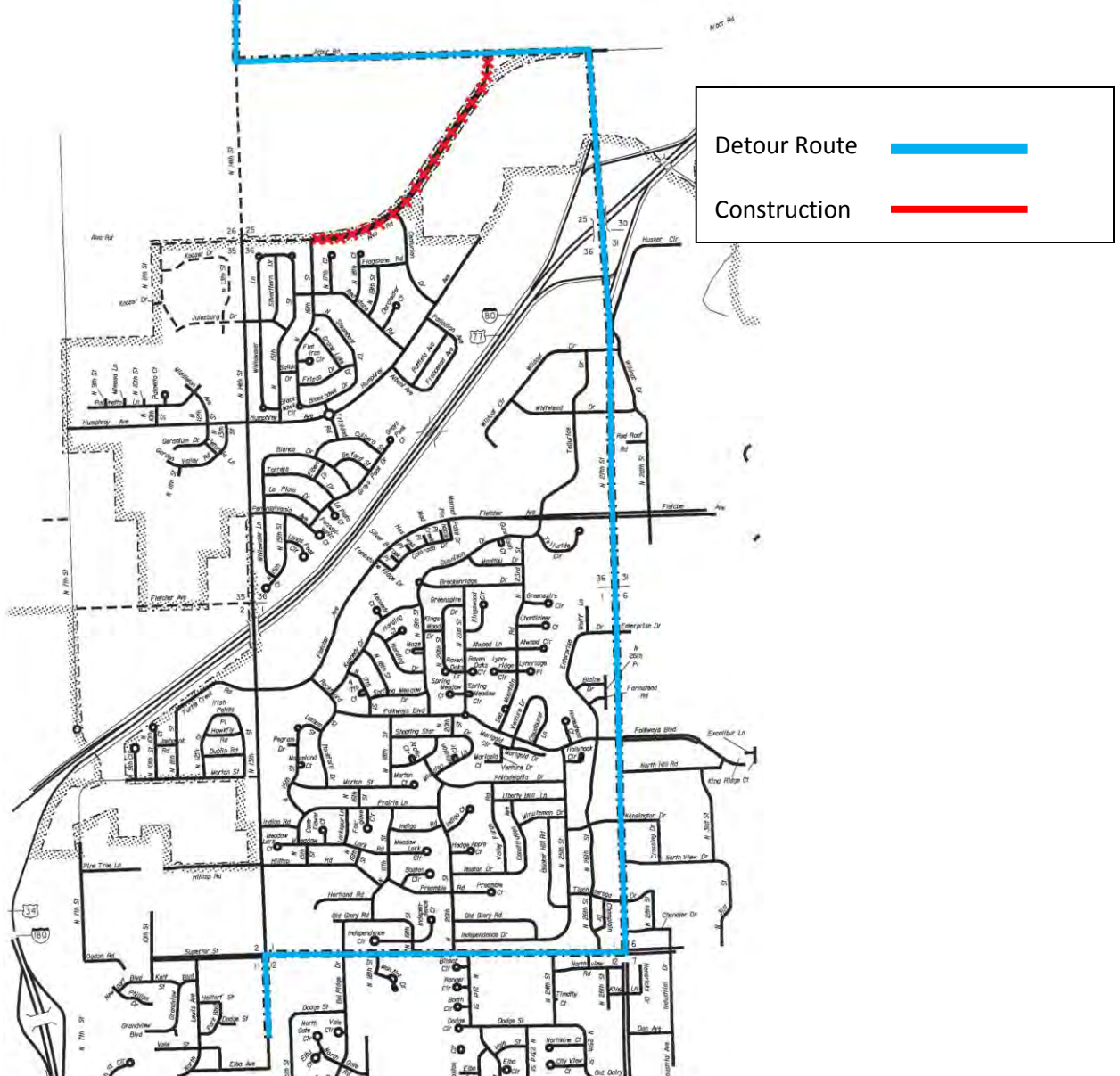
| Highway Number & General Location Info | | Additional Info – if available – Restrictions – Type of Work <i>REMEMBER to Check 511 TEXT Page for extra information</i> | Date Entered/ Updated | District | Anticipated Completion |
|--|-----------------------------|---|-----------------------------|----------|---------------------------|
| S40D | Both directions @ Jct. N-11 | Bridge closed, Detour – use I-80, Alda Road and Rosedale Road | 9-26-11 | 4 | |

Posted Detour for 14th Street Bridge over I-80 – Lincoln - Detour

The contractor's schedule for NDOR's 14th Street Bridge over I-80 shows it is on schedule. The work consists of a Bridge Replacement and is anticipated to be completed in the summer of 2012.

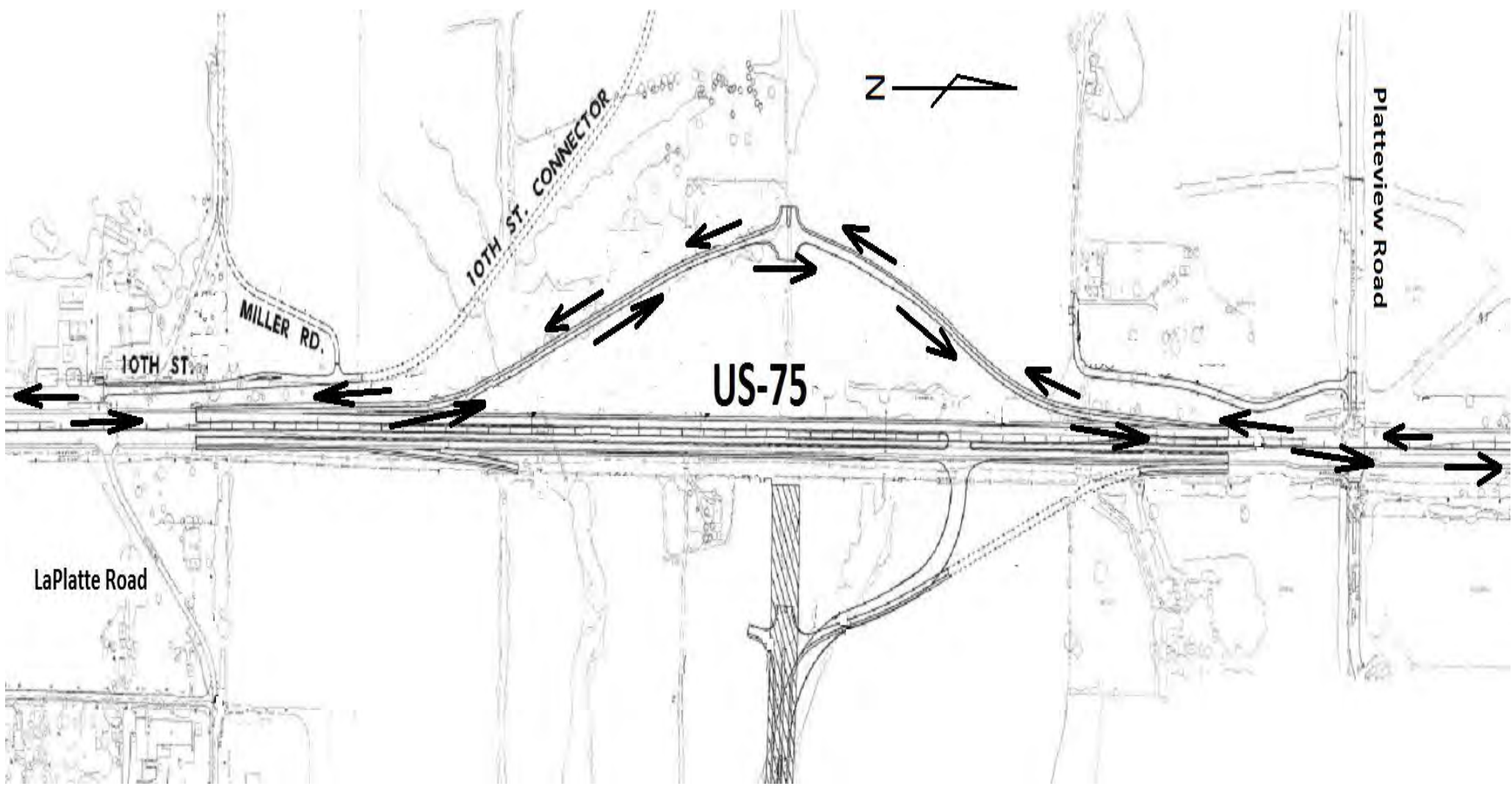
Although the bridge will be completed, it will not be placed in service until two City of Lincoln projects are completed. These projects include a roundabout at 14th and Superior and a surfacing project on the north side of our bridge project.

You will need to contact the City of Lincoln Public Works Dept. about completion dates for those.



Southbound traffic on 14th Street will be detoured East on Arbor Road to 27th Street, then South on 27th to Superior, then West on Superior to 14th.

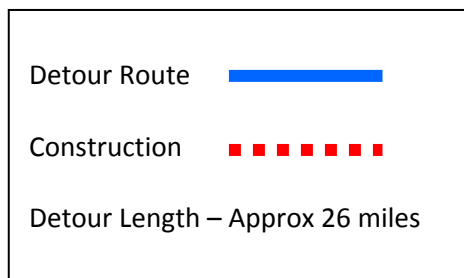
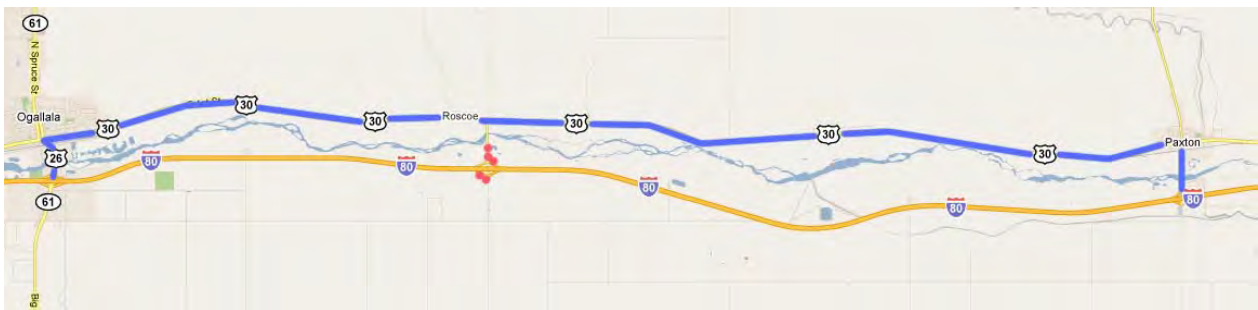
Northbound traffic on 14th Street will be detoured on a reverse of the above route .



Posted Detour for I-80 Exit 133 to Roscoe

Exit 133 will be closed – To travel to Roscoe use the Detour Route Below.

Beginning April 3, 2012 until Fall 2012, All traffic going to Roscoe will be detoured to Hwy 30 at the Paxton & Ogallala Interchanges.






NOTE: This detour is ONLY for those traveling to Roscoe

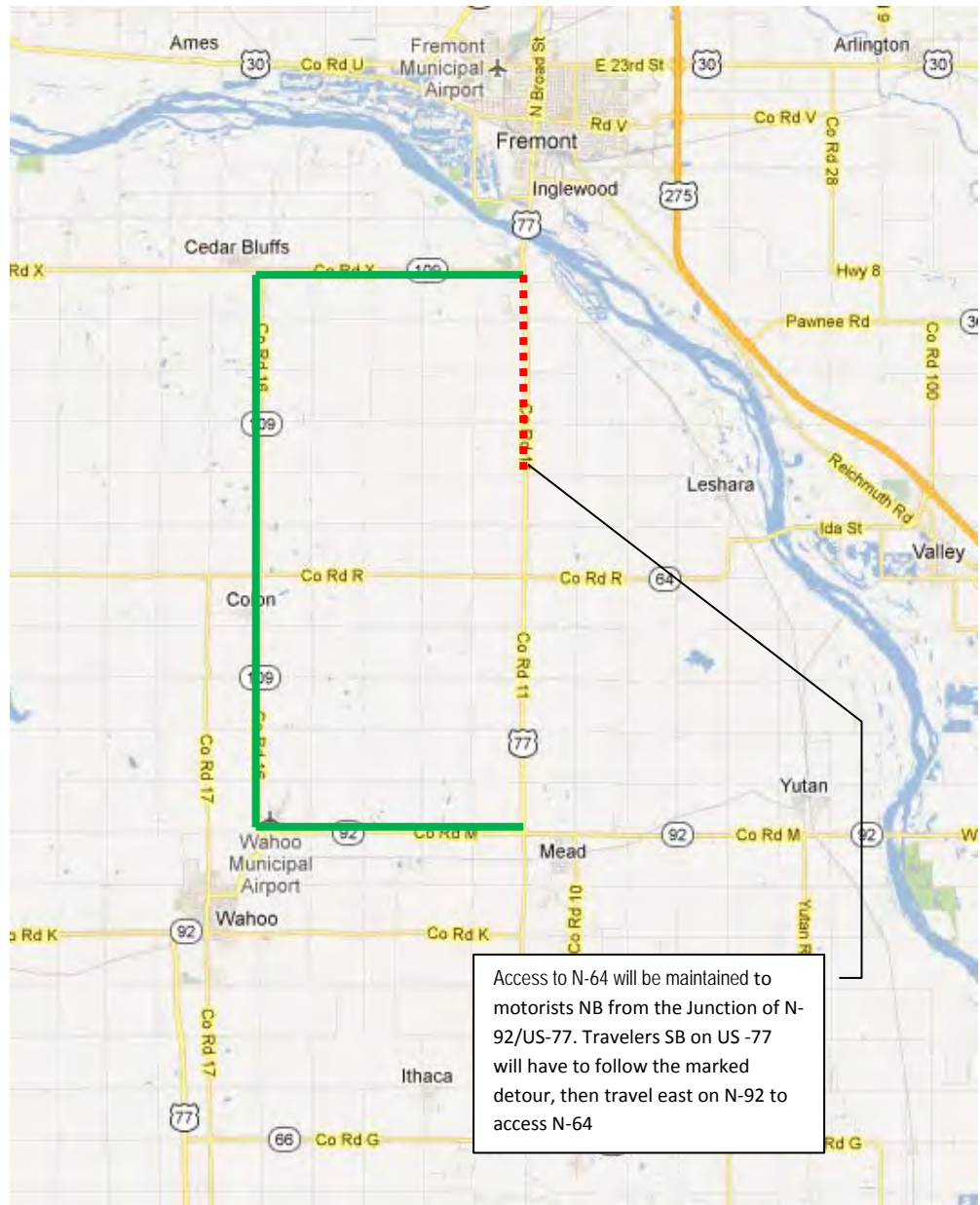
Roscoe Interchange will be closed thru this construction.

US 77 Detour for Otoe Creek Bridge Project

Begins week of April 9, 2012 (weather permitting) and ends in the fall of 2012.

Closure 
Marked Detour 

NORTH 



The project begins at the junction of US-77/N-92 and continues north to the Junction of US-77/N-109, south of Fremont.

US-77 will be **closed to thru traffic** during construction.

Northbound US-77 motorists will be detoured onto N-109, at Wahoo, north on N-109 for 11-miles, then east 5-miles on N-109 back to US-77, near Fremont. Southbound motorists will be detoured on to N-109 south of the Platte River, 5 miles west, and then south for 11 miles to US-77, at Wahoo.

Access north to N-64 will be maintained for motorists at the junction of N-92/US-77. Travelers southbound on US-77 will follow a marked detour, then travel east on N-92 to access N-64.

District Phone Numbers

| | |
|------------------|----------------|
| District 1 | (402) 471-0850 |
| District 2 | (402) 595-2534 |
| District 3 | (402) 370-3470 |
| District 4 | (308) 385-6265 |
| District 5 | (308) 436-6587 |
| District 6 | (308) 535-8031 |
| District 7 | (308) 345-8490 |
| District 8 | (402) 387-2471 |