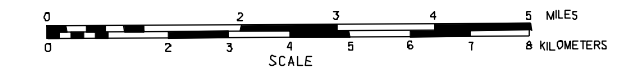


GENERAL HIGHWAY MAP CHASE COUNTY NEBRASKA

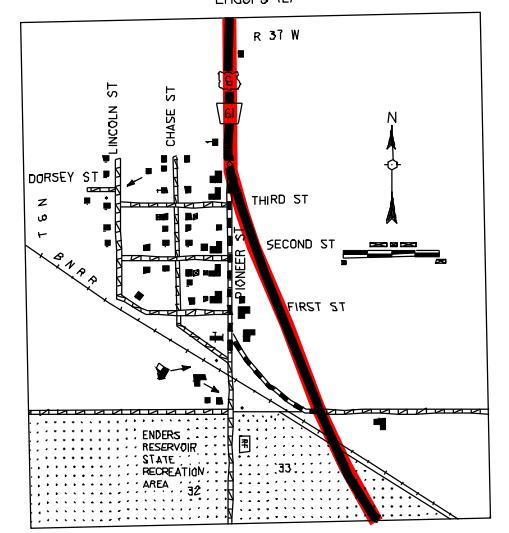
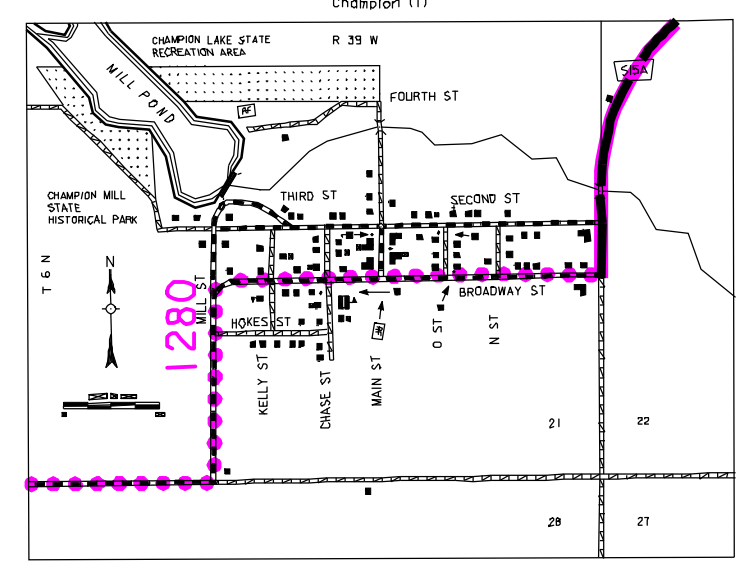
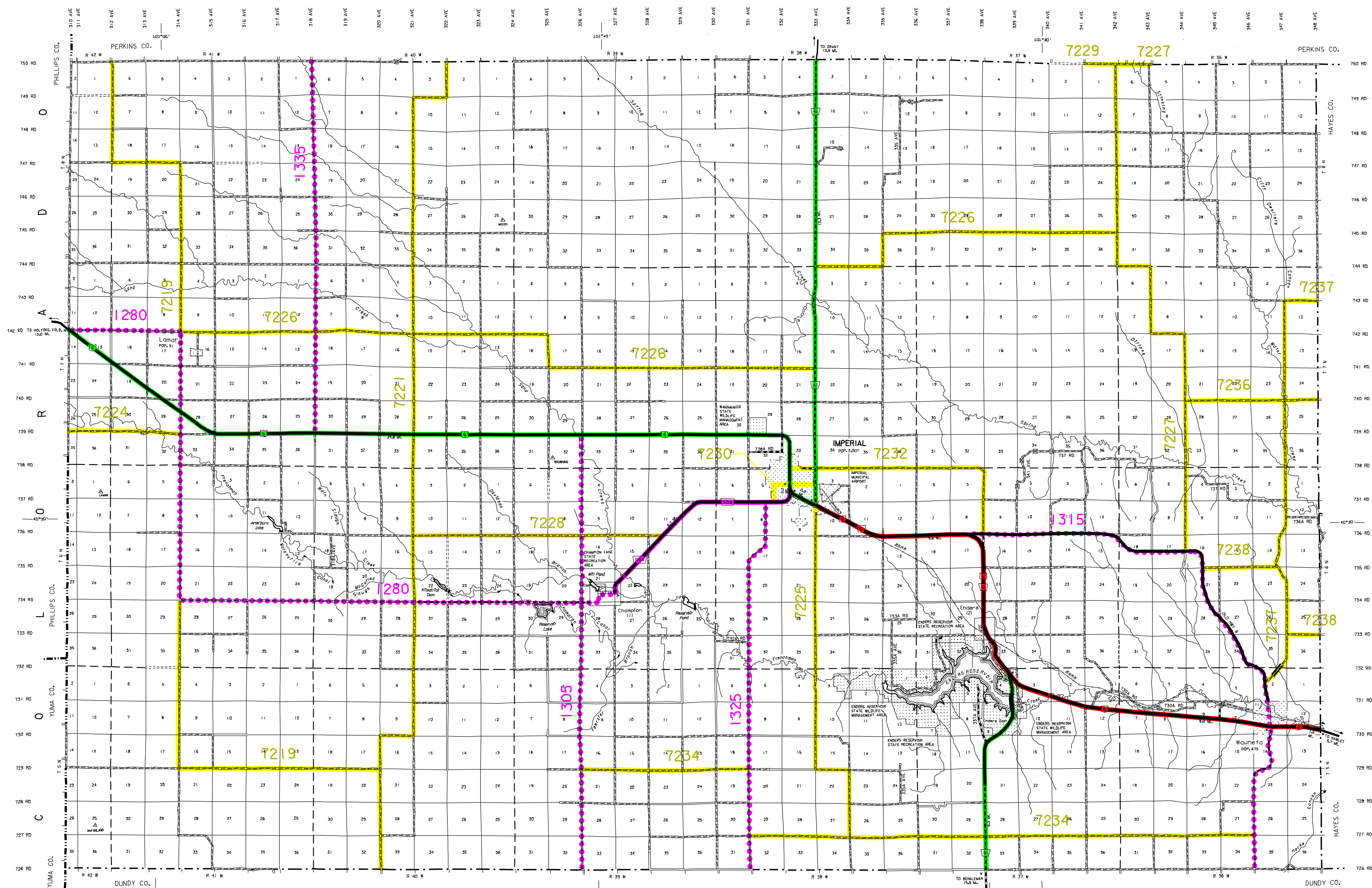
PREPARED BY THE
DEPARTMENT OF ROADS
GIS/MAPPING SECTION
IN COOPERATION WITH THE
U.S. DEPARTMENT OF TRANSPORTATION
FEDERAL HIGHWAY ADMINISTRATION
1989



NAME	REVISION HISTORY	DATE	REVISION
L. COLDSMITH	NOV. 2000	911 SYSTEM	
L. COLDSMITH	DEC. 2005	911 SYSTEM	

LEGEND

- Proprietary Road
- Unimproved Road
- Gravel or Crushed Rock
- Aggregate Pfl.
- Multiple Lane Undivided Highway
- Asphalt/Bituminous Surface
- Concrete/Asphalt Surface
- Multiple Lane Divided Highway
- Concrete/Asphalt Surface
- Divided Highway
- Interstate Highway with Full Control of Access
- State Roads and Streets
- 911 NAMED/Numbered Roads
- Interstate-Numbered Highway
- US-Numbered Highway
- State-Numbered Highway Spur
- State-Numbered Highway Link
- Highway Reference Post Number
- Interstate Exit Number
- Wide Stream
- Narrow Stream
- Irrigation Ditch
- Reservoir, Pond or Lake
- Reservoir, With Dam
- Highway Bridge-Any Type
- Small Bridges-Closely Spaced
- General Bridge
- Arch Bridge
- Trauss Bridge
- Pedestrian Underpass
- Railroad Overpass
- Railroad Underpass
- Dam with Road on Top
- Cattle Guard
- Dwelling
- Row of Dwellings
- Cemetery
- Church or Other Religious Institution
- Church with Cemetery Adjacent
- Hospital
- Business
- Industrial Plant
- Filling Station
- Grain Elevator
- Aggregate Pfl.
- Agricultural Experimental Station
- Educational Institutions
- Public Use Area
- Recreational Facilities
- Rest Area
- Ranger Station
- Flat Watchers
- Community Hall
- Correctional Institution
- Tourist Court or Motel
- Monument-Small
- Museum
- Fire Station
- Courthouse
- Armory
- Post Office
- Highway Maintenance Yard
- Dump Area
- Sewage Disposal Plant
- Water Supply Stand Pipe
- Radio or TV Station
- Weight Station or Port of Entry
- Commercial or Municipal Airport
- Airport with Fenced Runways
- State Boundary
- Township Line
- Section Line
- Corporate Limit Lines
- Parks and Other Reservations
- Boundary Limits of Area Shown In Encumbrance Fee Statements for Actual
- State Capitol
- County Seat
- Other Cities and Villages
- Incorporated City or Village
- Triangulation Station
- Points Between Which Distances Are Measured Indicated Thus
- Latitude and Longitude

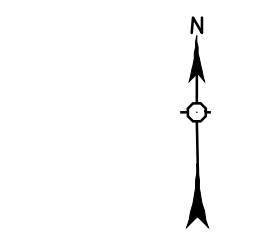


LEGEND

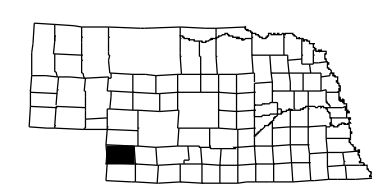
NATIONAL FUNCTIONAL CLASSIFICATION:

- INTERSTATE.....
- OTHER RURAL PRINCIPAL ARTERIALS.....
- RURAL MINOR ARTERIALS.....
- RURAL MAJOR COLLECTORS(STATE).....
- (COUNTY).....
- RURAL MINOR COLLECTORS.....

Revised October 20, 1999
All Roads Not Otherwise Indicated Are Classified As Local



LAMBERT CONFORMAL CONIC PROJECTION
1983 NORTH AMERICAN DATUM
NEBRASKA COORDINATE SYSTEM



NEBRASKA
Department of Roads

POPULATION AS OF 1990 CENSUS
STATE HIGHWAYS CORRECTED TO 1993
AERIAL PHOTOGRAPHY TAKEN IN 1966